



PREDATOR, PREY, AND PEOPLE

HUNTING ON JEFFERSON COUNTY OPEN SPACE

True or False

More Americans are injured annually by vending machines than hunting



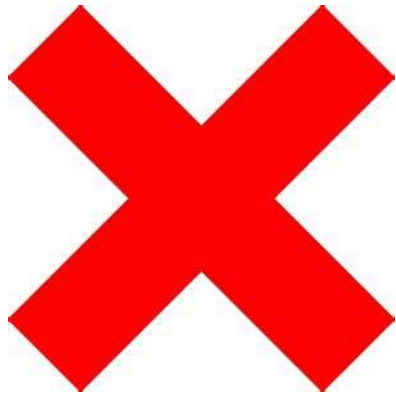


Vending machines: 1,730 accidents per year
Hunting: 578 accidents per year
Firearms are involved in less than 1% of all accidental fatalities.

True or False

The fastest growing market in hunting is males 60 and older



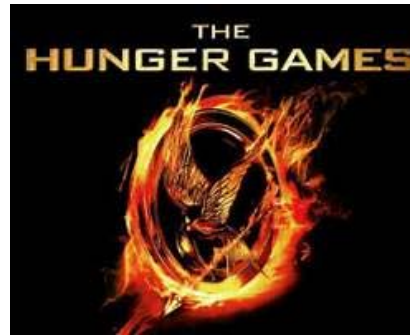


Female participation increased 10% from
2008-2012

3.35 million female participants

Bonus Points!

Which 2012 movie contributed to a 14% increase in female youth participation in archery from 2012 - 2014?



JEFFERSON  **N**
COUNTY COLORADO
Open Space

True or False

As a result of hunting,
there are now fewer
game animals than
ever before





1907 – 41,000 Elk in North America

Today – 1 million +

1900 – 500,000 Whitetail Deer

Today – 2 million

1950 – 12,000 Pronghorn Antelope

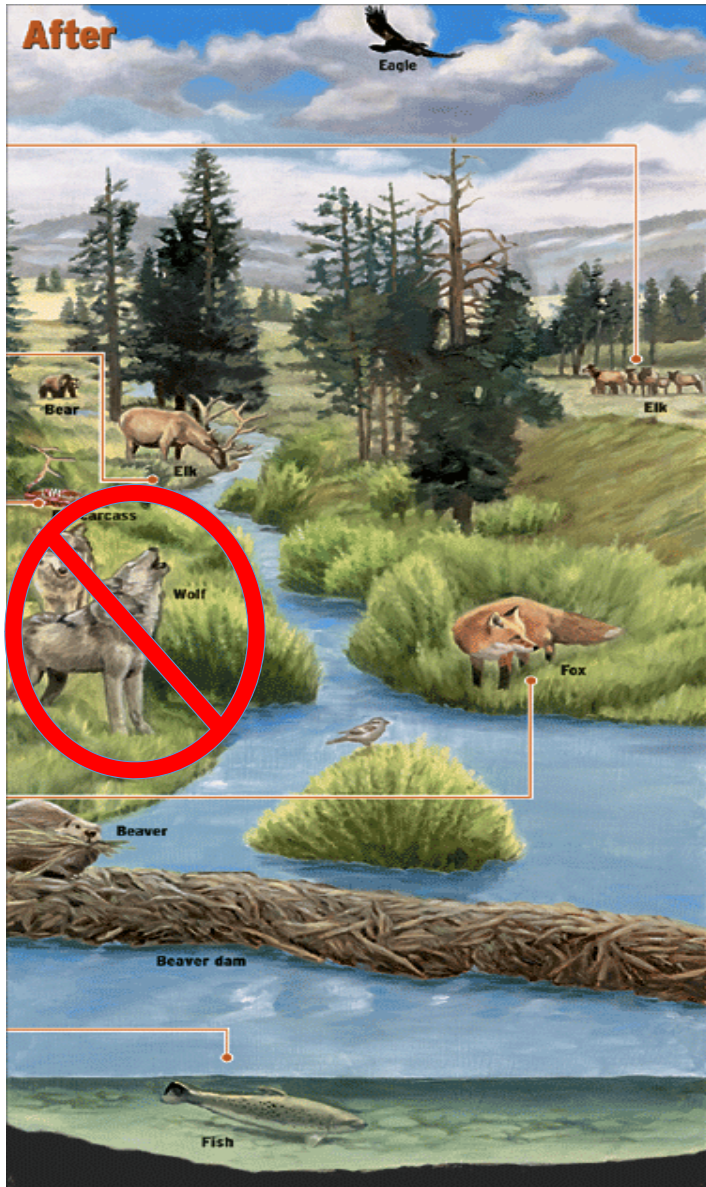
Today – 1.1 million

Carrying Capacity and Trophic Cascade



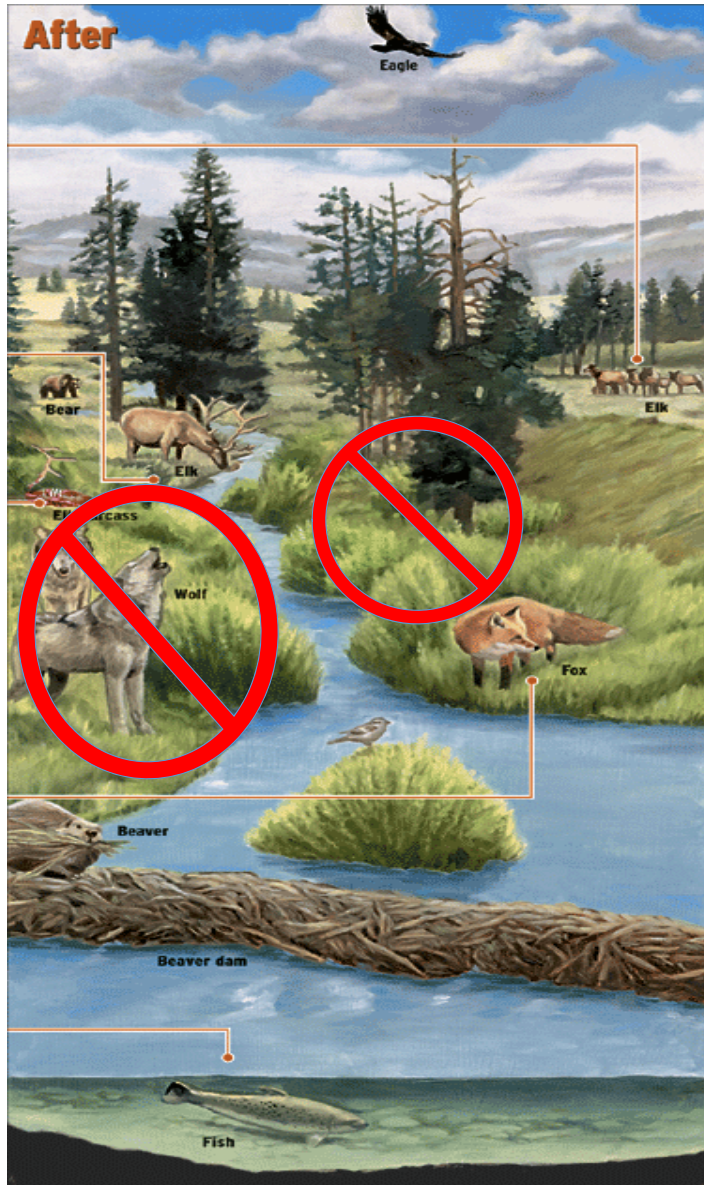
“Experts on predation have become increasingly convinced that ecosystems are ruled from the top”

-Yale School of Forestry and Environmental Studies



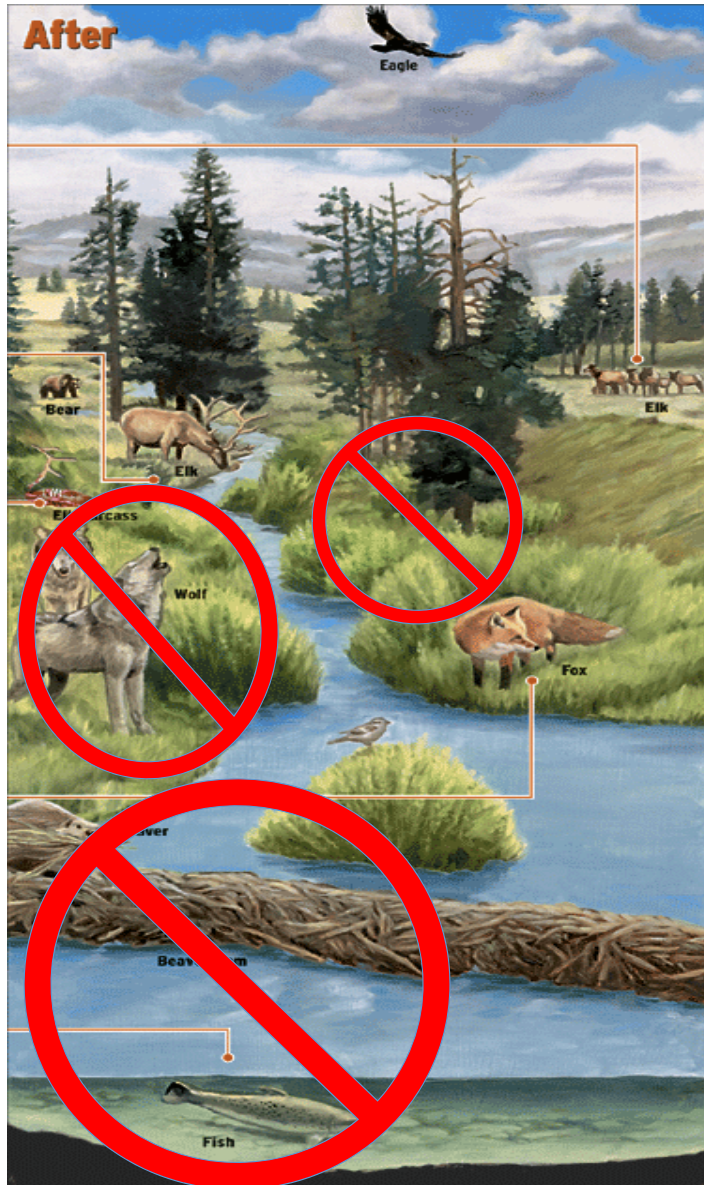
Yellowstone: A Case Study

- Wolves are removed as the apex predator, creating a downward cascade.



Yellowstone: A Case Study

- Vegetation is trampled and overgrazed.



Yellowstone: A Case Study

- Water quality decreases and waters warm.
- Food for beavers becomes scarce. Few remain to build dams.



Yellowstone: A Case Study

- Grizzly Bear populations suffer from overgrazing of chokecherries, buffaloberry and serviceberry.



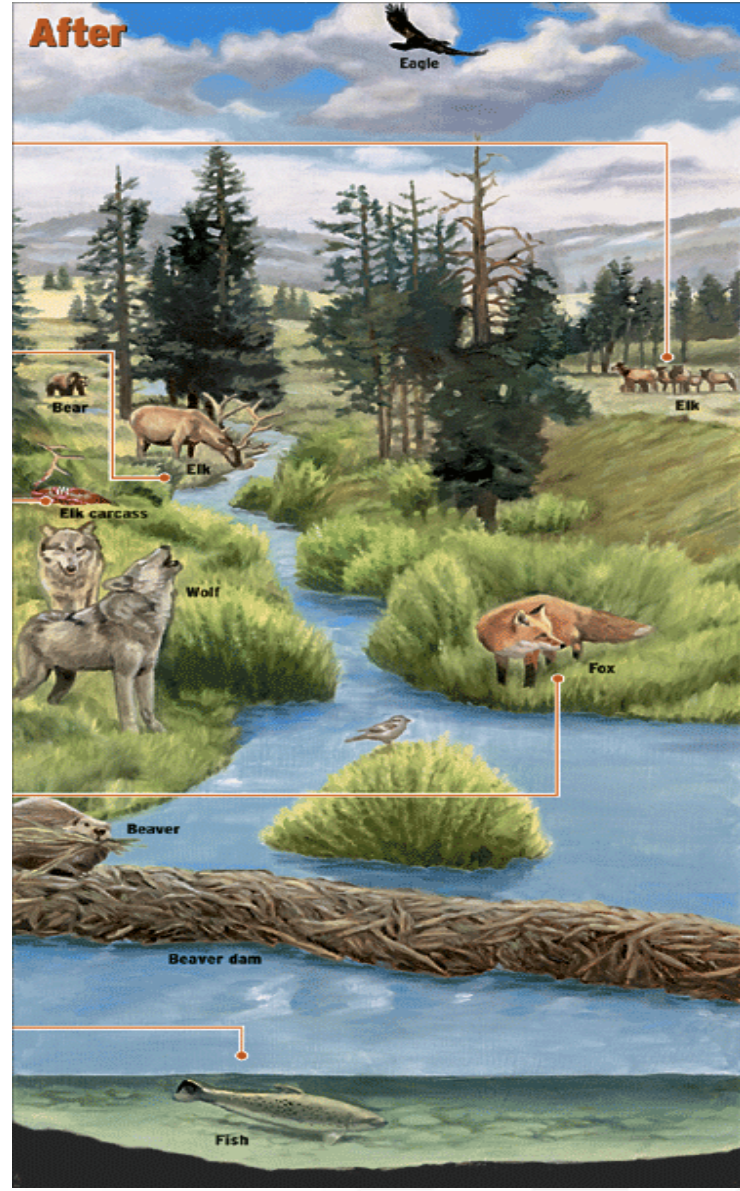
Yellowstone: A Case Study

- Coyote populations explode, taking over role of leading predator.
- Coyotes compete with foxes, reducing fox numbers.



Yellowstone: A Case Study

- Trampled and over browsed landscape lacking biodiversity.



JCOS Mission

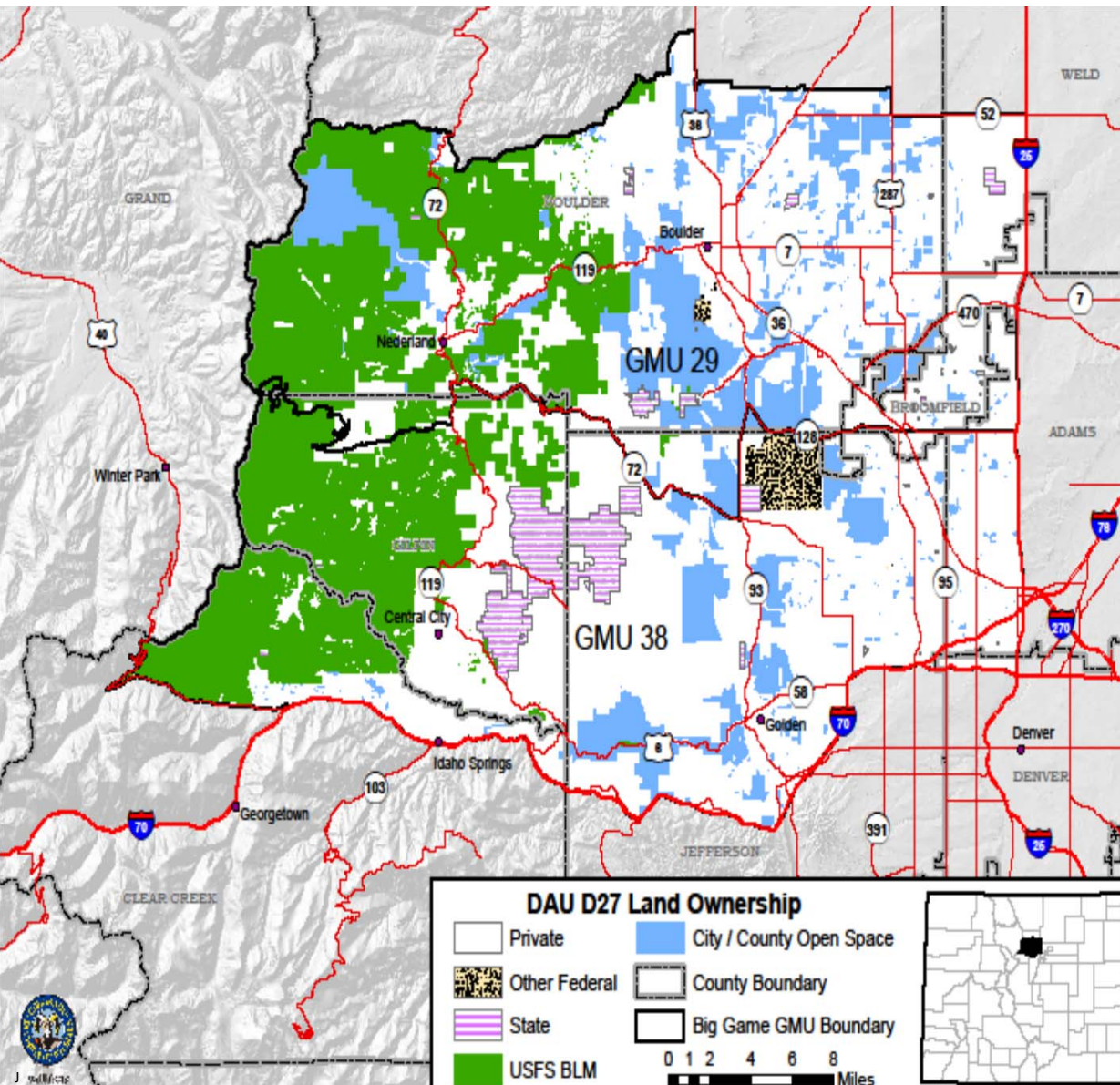
PRESERVE *open space and parklands*

PROTECT *park and natural resources*

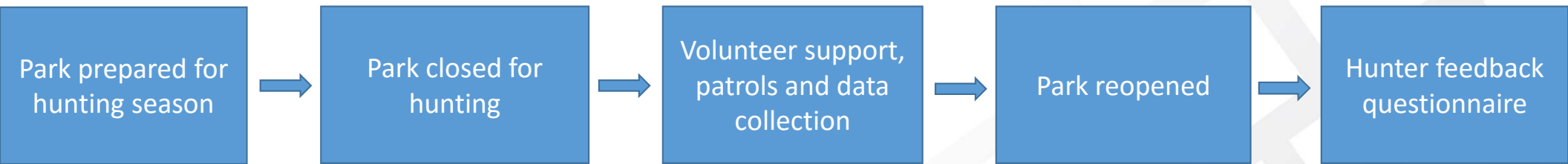
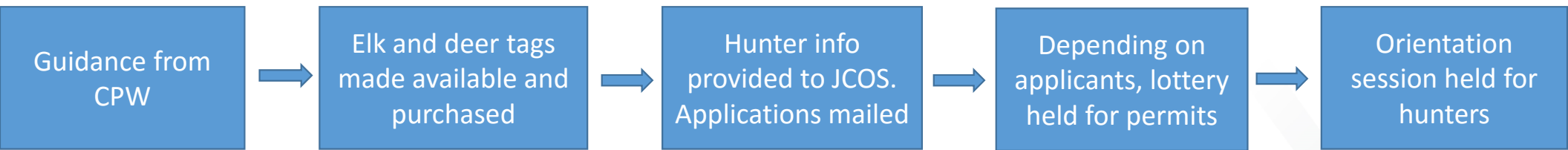
PROVIDE *healthy nature-based experiences*

JCOS Mission in Action

- Help maintain optimal big game populations
- Reduce over browsing and agricultural damage
- Promote natural migration patterns
- Decrease spread of Chronic Wasting Disease (GMU 38 has one of highest rates in the state)
- Decrease habituation to humans
- Continues traditional use of properties
- Provide healthy, nature-based activities



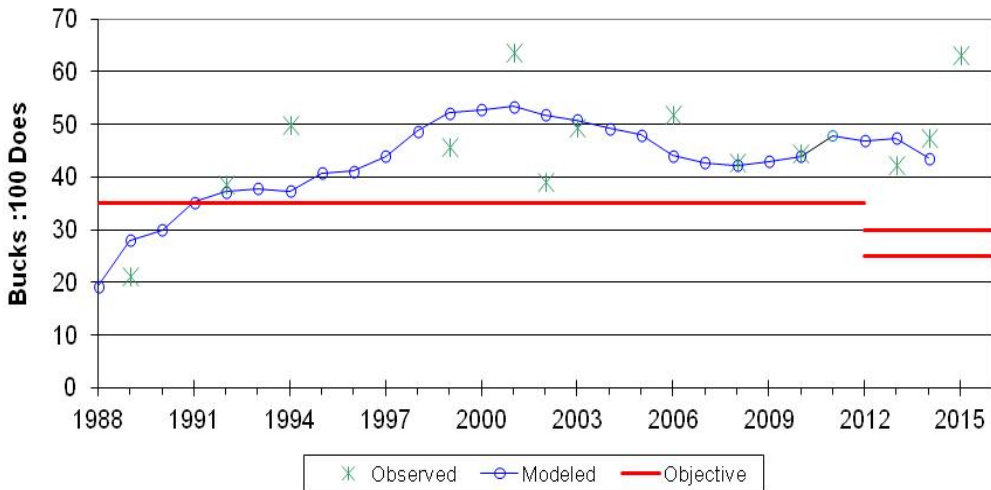
- Game Management Units 29 and 38
- 896 square miles
 - ❖ 60% private
 - ❖ 26% state and federal
 - ❖ 14% city/county open space
- Portions of Clear Creek, Jefferson, Gilpin, and Boulder counties



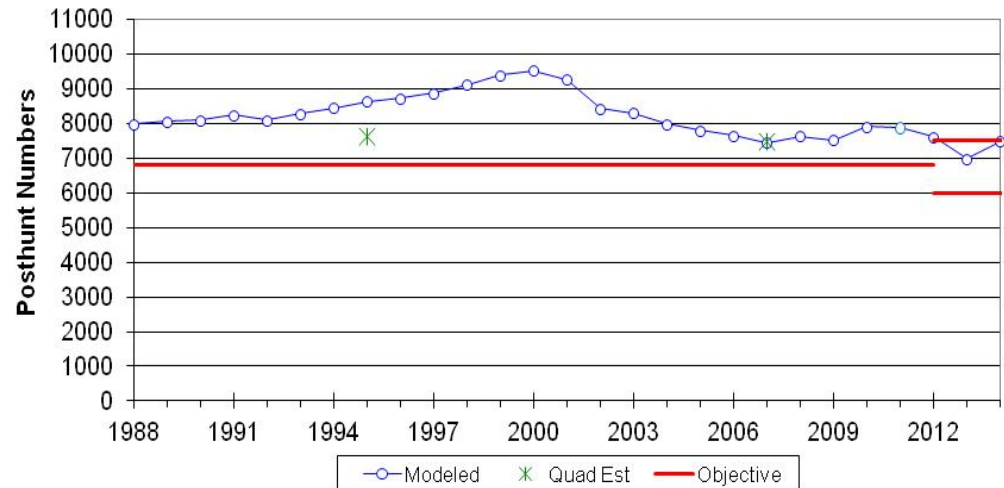
Guidance from CPW



D-27 Posthunt Buck/Doe Ratios



D-27 Posthunt Population Estimate



Year	N	Sex Ratio
2013	7122	47.7
2014	7634	44.0
Objectives**	6000-7500 (7000)	25-30 (27)***



Tags Made Available

Limited Licensing Leftover

HUNT CODE	GMUs	AVAIL QUOTA	OPEN DATE	CLOSE DATE	DESCRIPTION
Deer					
DF029O1M	029	7	09/12/15	09/20/15	++
DF029P5R	029	251	09/01/15	11/30/15	## Private Land Only
DF033P6R	033	98	08/15/15	01/31/16	++ Private Land Only See Brochure
DF034O1M	034	10	09/12/15	09/20/15	++
DF038L1R	038	6	12/01/15	01/31/16	++ Jefferson County Portion Only
DF038O1M	038	12	09/12/15	09/20/15	++
DF038O2R	038	14	10/17/15	10/25/15	++
DF038O3R	038	*	10/31/15	11/08/15	++
DF038O4R	038	*	11/11/15	11/15/15	++
DF038P5R	038	334	09/01/15	11/30/15	++ Private Land Only
DF087O2M	087, 088, 089, 090, 095	15	10/10/15	10/18/15	
DF089O1R	089	4	10/24/15	11/03/15	
DF089S2R	089, 090, 095	85	10/01/15	12/31/15	## Season Choice Restri ctions See Brochure
DF092O2M	092	11	10/10/15	10/18/15	
DF092S3R	092	69	10/01/15	01/31/16	## Season Choice Restri ctions See Brochure

Hunter Info Provided | Applications Mailed

August 11th, 2017

Dear Hunter:

In a continuing effort to manage elk and deer populations, Jefferson County Open Space (JCOS) will allow limited hunting on Centennial Cone Park in Game Management Unit 38 during the 2017-2018 late season. The late season runs from December 1, 2017 to January 31, 2018.

Access to the park will be approved for approximately 90 hunters. There will be 55 openings for cow elk and 35 openings for doe or either sex deer. If the number of elk or deer applications exceeds the number of permits allowed, then a drawing for permits will take place. The drawing will take place on September 15th at 12:00 p.m., in the Ponderosa Room, at the Open Space office, 700 Jefferson County Parkway, Suite 100, Golden, CO 80401. You do not have to be present to be successful.

Hunters will be able to access the park for hunting during the entire late season, December 1, 2017 through January 31, 2018, except for days that are designated as "Rest" days (see enclosed schedule).

The appropriate licenses must be acquired through Colorado Parks and Wildlife (CPW) in order to apply to JCOS for a free access permit to Centennial Cone Park. If you have a valid license(s) and have interest in hunting on Centennial Cone Park, please fill out the enclosed access permit application and return it with a copy of your CPW license(s) to JCOS by September 8th, 2017.

If you have further questions, feel free to call me at 303-271-5909 or Andrew Joyce at 303-271-5973.

Sincerely,

Mark Oline
Park Ranger Lead

Jefferson County Open Space Centennial Cone Park Hunting Access Permit Application

ELK APPLICATION

Please complete the following information:

Name: _____

Address: _____

Home Phone: _____ Cell Phone: _____

Email: _____ Preferred method of contact? _____

Check here if you have hunted at Centennial Cone Park before.

- All access permit holders must possess a valid CPW hunting license.
- Access permits are for cow elk, doe or either sex deer.
- Access permits are non-transferable. One other non-hunting person may accompany you hunting.
- Vehicle access is limited to the designated parking area. All hunting access and game retrieval is walk-in, walk-out. Horses and pack animals are permitted. No OHV's allowed.
- See the enclosed information sheet for additional information.

APPLICATION DEADLINE: SEPTEMBER 8th 2017

Mail Completed Application To:

Jefferson County Open Space
Hunting Program
700 Jefferson County Parkway, # 100
Golden, CO 80401

- A copy of your valid CPW license is required with application
- Faxed applications are not accepted
- No private land only licenses accepted

For more Information Contact:
Jefferson County Open Space
Hunting Program
700 Jefferson County Pkwy Suite #100
Golden, CO 80401
(303) 271-5909

JEFFERSON 
COUNTY COLORADO
Open Space

Lottery System



JEFFERSON 
COUNTY COLORADO
Open Space

Orientation

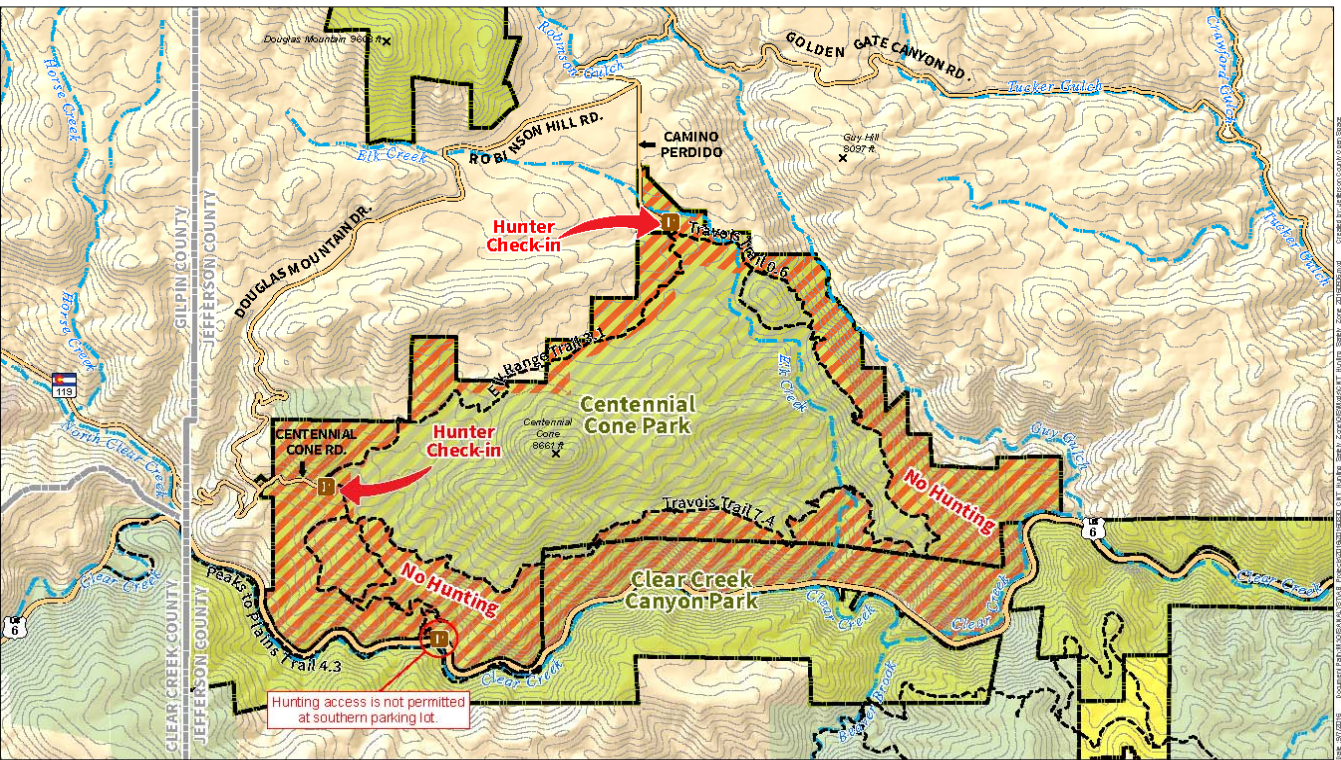
Usually a video - too large to include

Prepare the Park

Centennial Cone Park

Hunting Safety Zone

jeffco.us/open-space



- No Hunting Zone
- Jeffco Open Space Owned
- Other Public or Conservation Land
- Jeffco Open Space Conservation Easement
- Hunting Zone
- County Boundary
- Shared Use Trail
- Contour Line (80 ft.)

0 0.5 1 Miles
 Scale is 1:44,500 when printed at 8 1/2" x 11"
 Last Revised 9/7/2016
 Sources: Jeffco Open Space, Jeffco ITS, USGS, NHD, CDOT

Disclaimer: This information/map is the property of the Jefferson County Open Space Program (JCOS), Jefferson County, Colorado and is copyrighted material. Reproduction, manipulation or distribution of this product is prohibited without the prior written consent of JCOS staff. Jefferson County does not warrant the completeness, accuracy, or correctness of this product, its use for any purpose, and shall not be liable for damages of any kind arising from use of the product or for any errors or inaccuracies.



JEFFERSON COUNTY COLORADO
 Open Space

Park Closed for Hunting



Volunteer Engagement



JEFFERSON 
COUNTY COLORADO
Open Space

Rest Days

Hunting Schedule – Designated "Rest" Days

December 2017

Sunday	Monday	Tuesday	Wednesday	Thursday	Friday	Saturday
Park is Closed to All Use on Rest Days					1	2
3	4	5	6	7 No Hunting Rest Day	8 No Hunting Rest Day	9
10	11	12	13	14	15	16
17	18 No Hunting Rest Day	19 No Hunting Rest Day	20	21	22	23
24	25	26	27 No Hunting Rest Day	28 No Hunting Rest Day	29	30
31						

Park is **CLOSED**
to all use on rest
days!

Harvest Numbers

YEAR	Animals Taken	
	ELK	DEER
2001/02	3	N/A
2002/03	0	N/A
2003/04	4	N/A
2004/05	3	9
2005/06	2	6
2006/07	2	4
2007/08	3	13 4 bucks
2008/09	0	13 11 bucks
2009/2010	4	7 3-B, 2- D
2010/2011	1	15 12 Bucks
2011/2012	2	16
2012/2013	0	15 6 Bucks
2013/2014	0	12 4 Bucks
2014/2015	3	19 9 Bucks
2015/2016	3	17
2016/2017	5	13 1 buck



JEFFERSON 
 COUNTY COLORADO
 Open Space

Citations, Violations and Problems



- Failure to Identify Sex
- Failure to Tag
- Shoot Throughs
- Trespass / Poaching

Hunter Feedback Questionnaire



March 8, 2016

Dear Hunter,

Thank you for your participation in the 2015-2016 hunting season at Centennial Cone Park. Reporting for the 2015-2016 season indicates a total harvest of three elk and 13 deer. If you did not report your harvest, please send an email or call XXXX with your report. Harvest details help us track management efforts accurately.

Your feedback can help us improve our hunting program. Please take this opportunity to tell us about your hunting experience in the park and with Jefferson County Open Space during the 2015-2016 season.

- How many days did you hunt in the park?
- Were you successful?
 - What did you harvest?
- Did you feel crowded by other hunters?
- Were there any issues with **park neighbors** or people other than hunters while you were out? If so, please explain.
- I would suggest breaking this up into each part of hunting and ask them to give a numerical rating to rate each and then ask for suggestions for improvement (1 (poor) – 5 (excellent) or NA for Not Applicable)
- Open Space Hunting Permit (lottery)
- Orientation
- Check in
- Check out
- Communication (written materials, email, phone calls)

“Please allow for group hunting”

“Draw me for deer next time”

“Another hunter walked between a herd of elk I was stalking and me”



Changes This Year

- Install ranch gates, locks and update signs on entry roads
- Decrease the volunteer presence
- Change the hunting zone to interior of trails
- Set clear expectations with easement holders

Staff Time for Program

Administration

- Send out and receive permit registration info – 24 hours
- Hunter drawing and selection process - 23 hours

Preparation

- Ranger Admin - 3 hours
- Mark boundary - 5 hours
- Hunter orientation - 4 hours
- Volunteer orientation - 1 hour
- Set up trailer - 3 hours
- Park closure - 4 hours

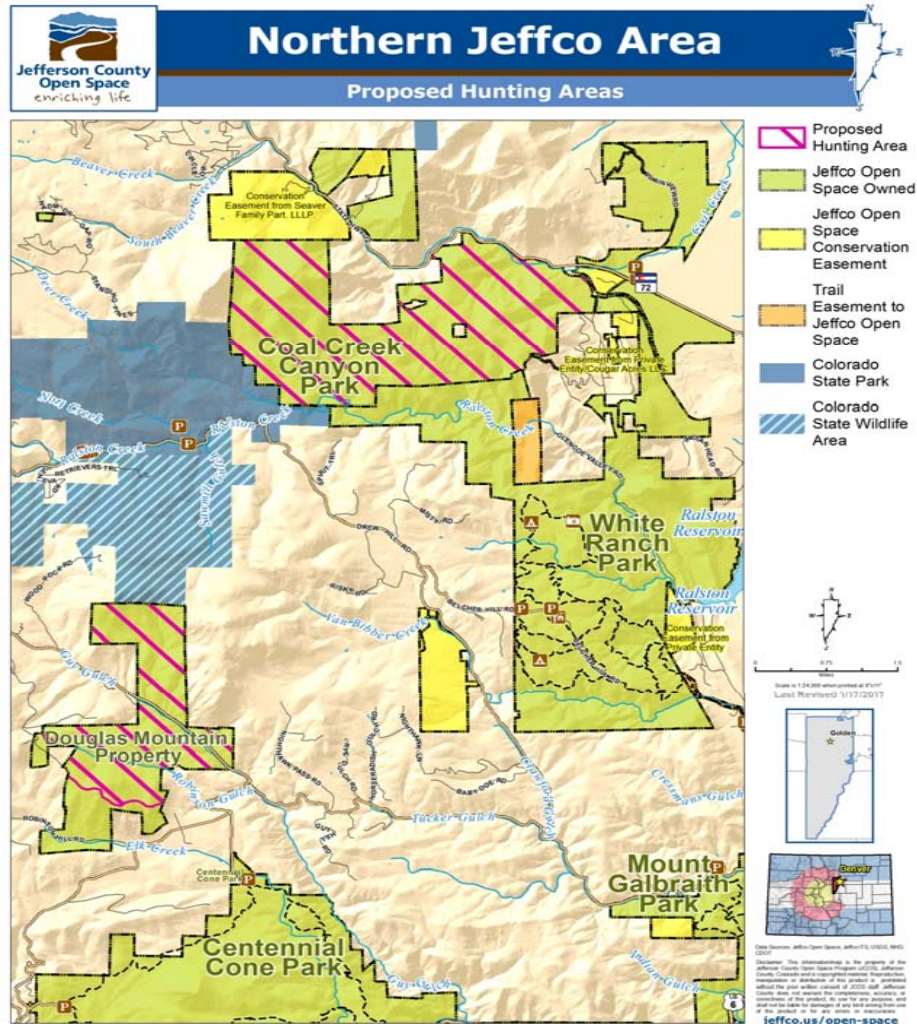
The Hunt

- Ranger activities and patrol - 105 hours
- Volunteer time - 200 hours

After hunt activities

- Open park - 4 hours
- Move trailer out and clean up - 3 hours

Future of Hunting on JCOS



- Douglas Mountain / Termentozzi
- Blue Mountain
- 4,658 additional acres of hunting access
- Addition of archery and muzzleloader

“Harmony with land is like harmony with a friend; you cannot cherish his right hand and chop off his left. That is to say, you cannot love game and hate predators... The land is one organism.”

— [Aldo Leopold](#)

Ben Stanley
John Queen

bstanley@jeffco.us

jqueen@jeffco.us

JEFFERSON 
COUNTY COLORADO
Open Space