



Dredges, Flumes, and Adits: How History Shapes Open Spaces



Photo credit: Liam Doran

Mission Statement

The purpose of the Breckenridge Open Space program is to preserve lands and trails through acquisition and stewardship efforts, with the goal of maintaining the unique mountain character of the Upper Blue Basin and our community's quality of life.

Open Space Program at a Glance

1996

Breckenridge voters approved a 0.5% sales tax to fund open space acquisitions & management

\$20,441,446

TOB Funds used to date for open space acquisitions

\$11,778,580

Funds contributed by Summit County Government towards joint purchases of open space

\$3,147,339

Total Open Space projected budget for 2017

\$92,331

Estimated value of volunteer time donated in 2016 via the Friends of Breckenridge Trails program

56+

Miles of multi-use non-motorized trails

1,683

Number of acres jointly purchased with Summit County through the B&B Mines acquisition, the program's largest acquisition

153

Total number of all open space acquisitions

4,740

Total number of acres protected as open space



Open Space & Trails Guiding Documents

Open Space Guiding Documents

- Open Space Plan
- Trails Plan
- Trails Standards and Guidelines
- Cucumber Gulch Preserve Management Plan
- Golden Horseshoe Management Plan
- Golden Horseshoe Nordic Feasibility Assessment
- Golden Horseshoe Backcountry Protection Strategy
- Open Space Forest Health Report
- Upper Blue Nordic Master Plan



Historic Resource Protection on Open Space



History of Breckenridge in relation to open space

What is the BHA?

Historic preservation projects on open space

What's next?

Questions

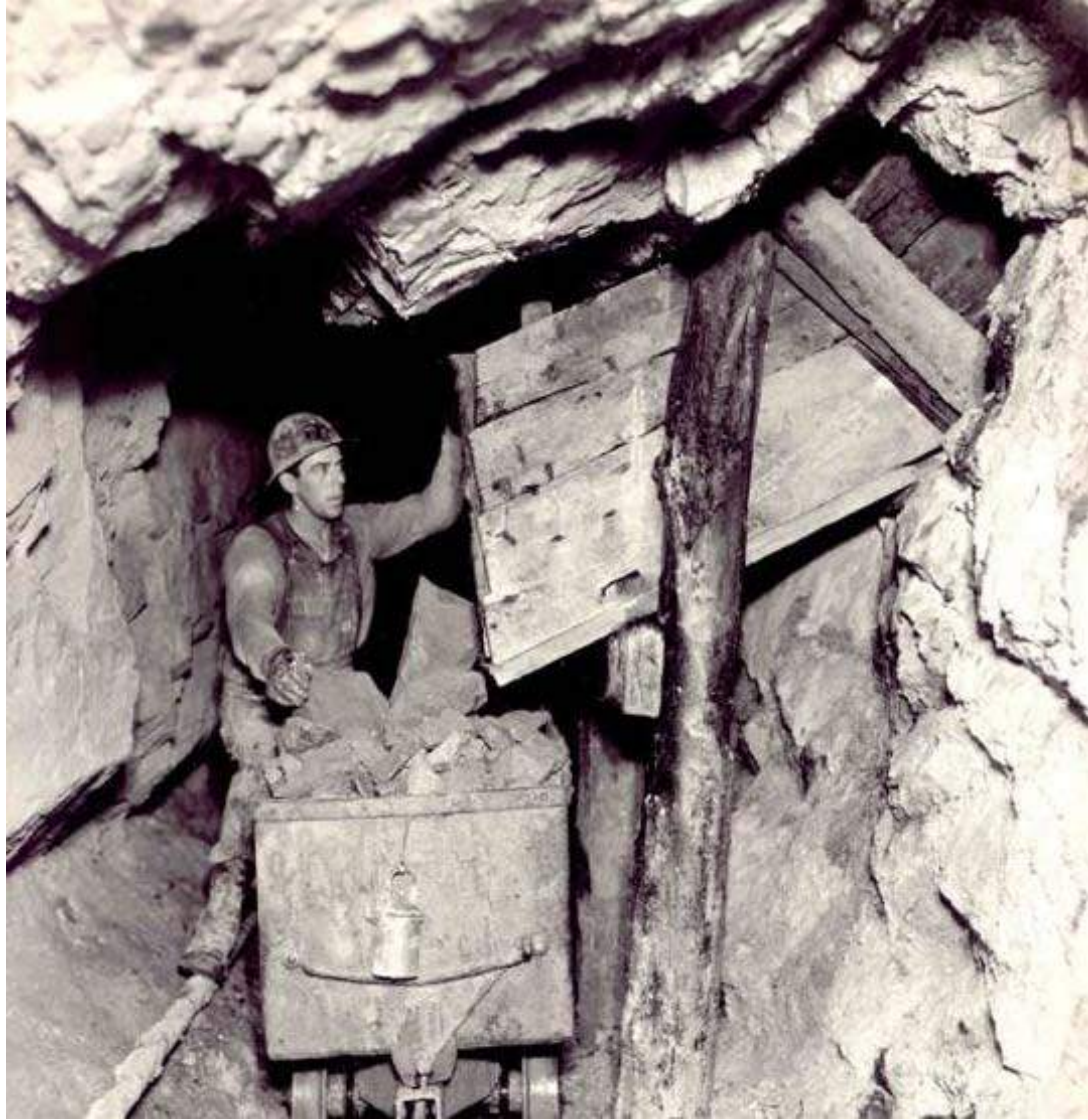
Early Day Breckenridge Main Street





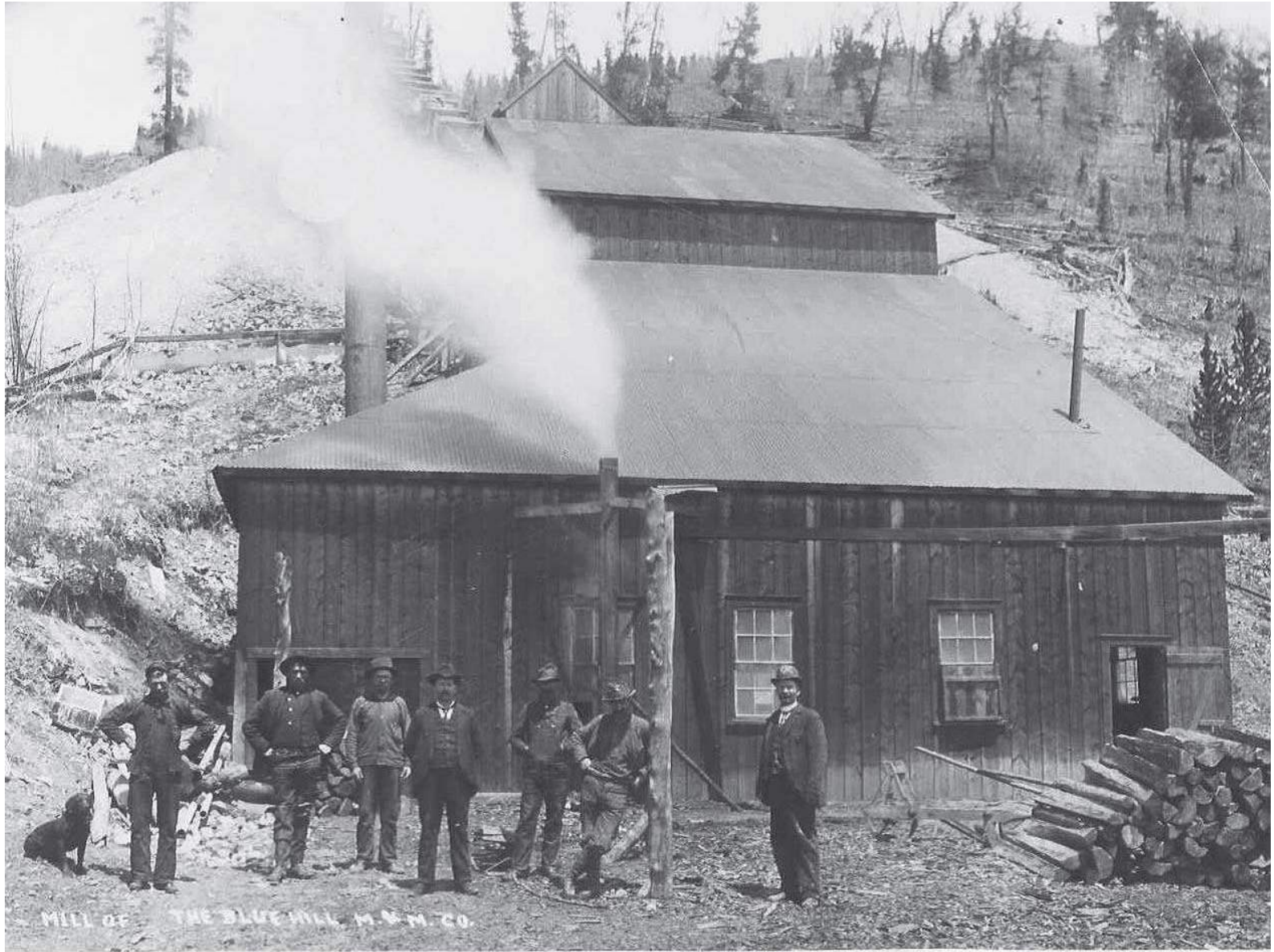






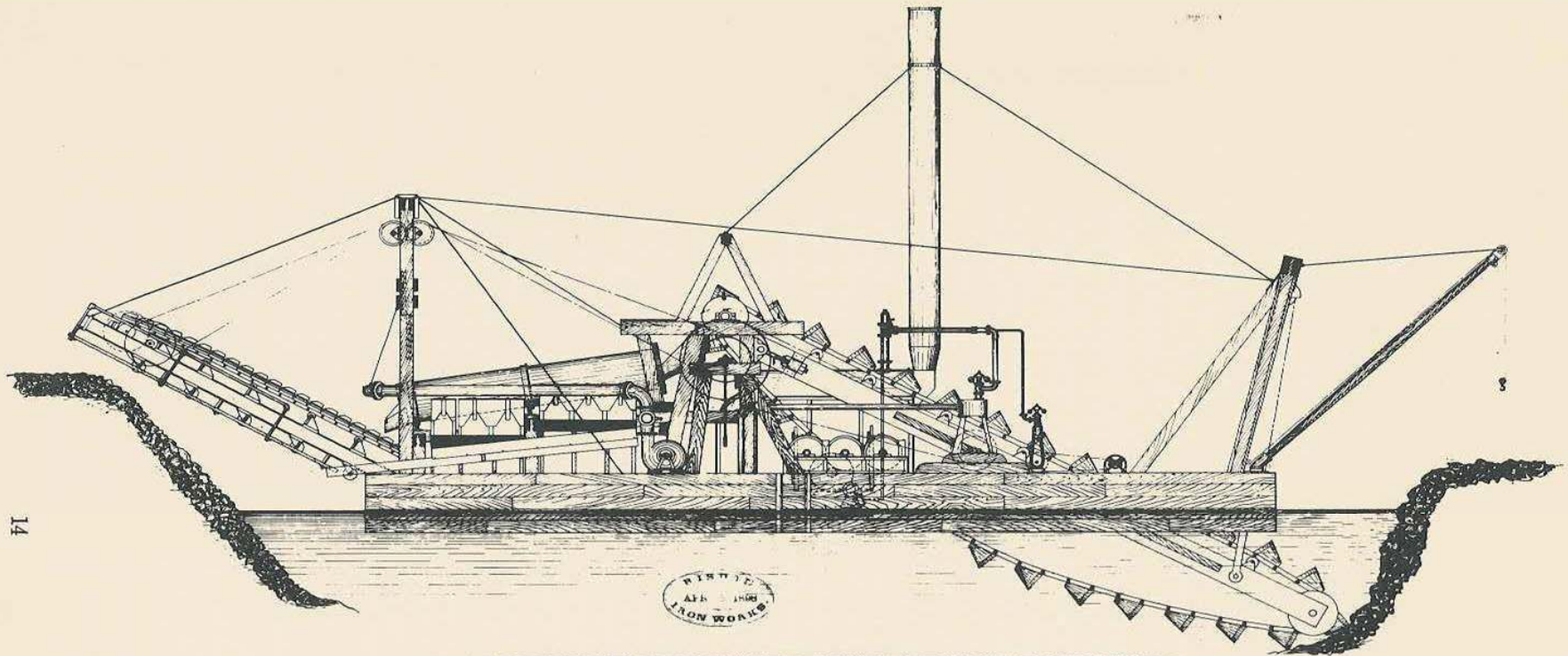


6249 Wellington Mill, Breckenridge, Colo.





14



WINDMILL
MAY 1868
IRON WORKS

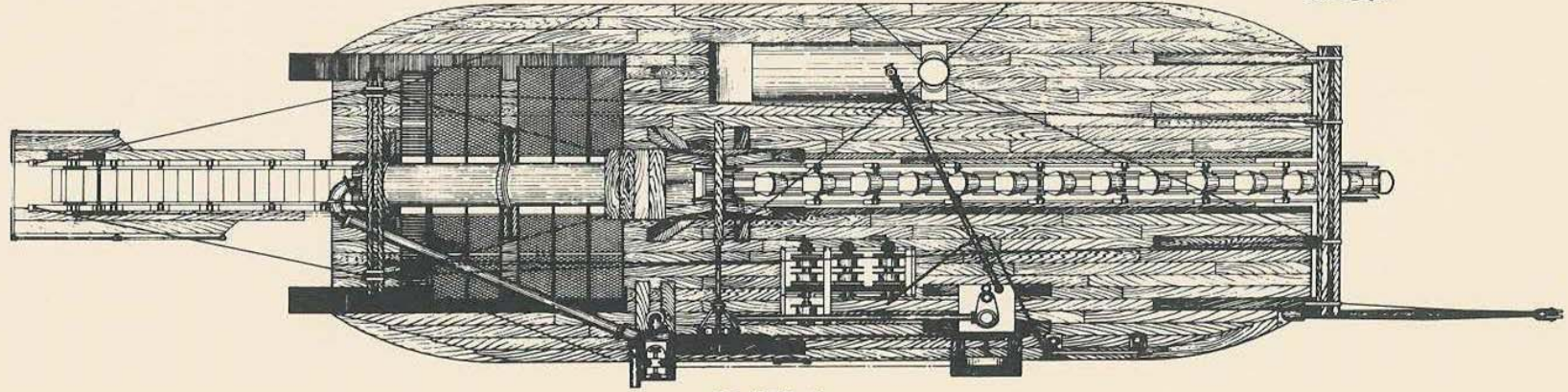


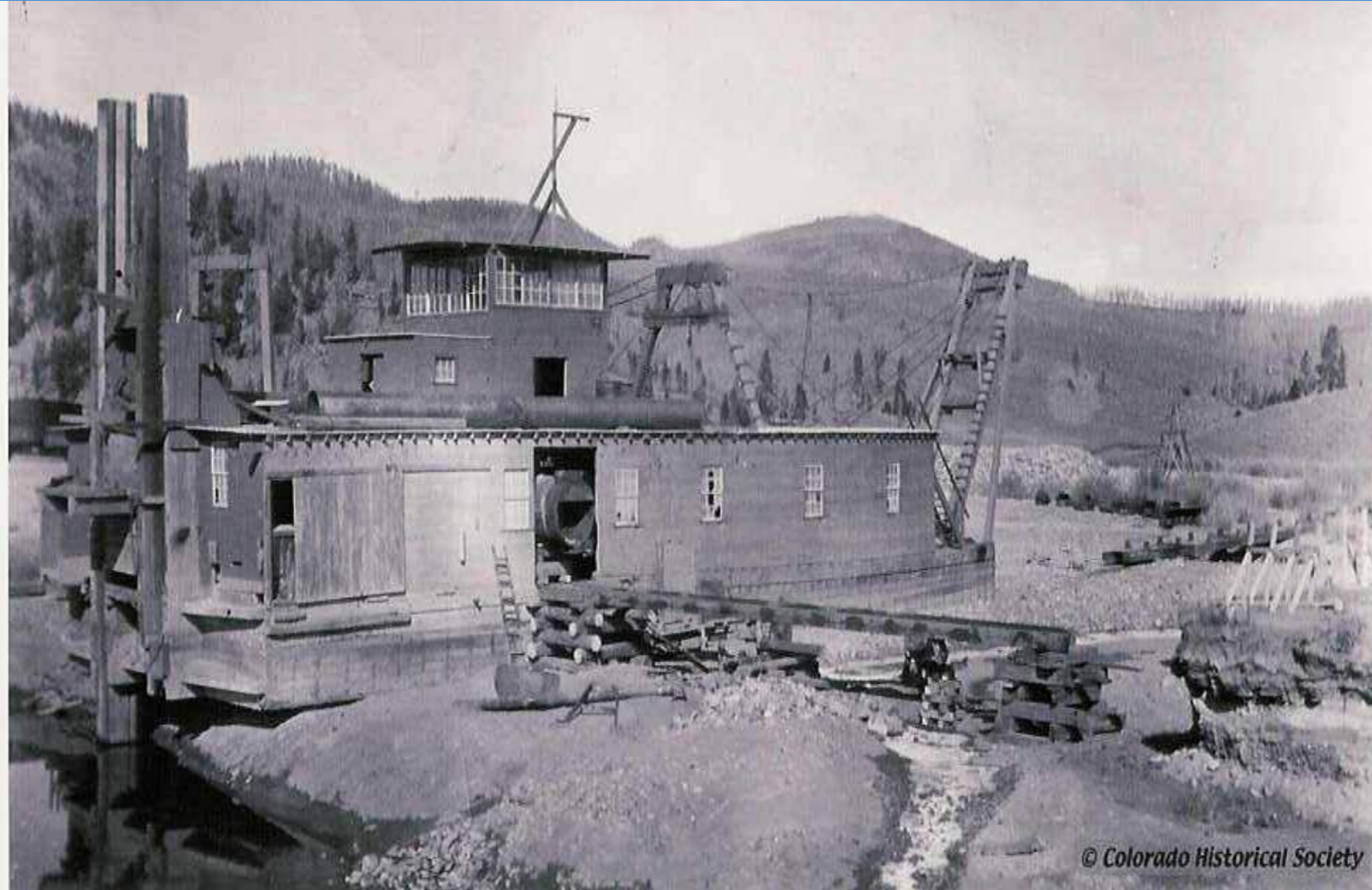
PLATE 5



Reiling Gold Dredge - 1911



Bucyrus #4 Dredge



© Colorado Historical Society







ROCKY MT. VIEW CO., GLENN L. BERNARDT PROP.
300 LAMAR ST., DENVER 28, COLORADO













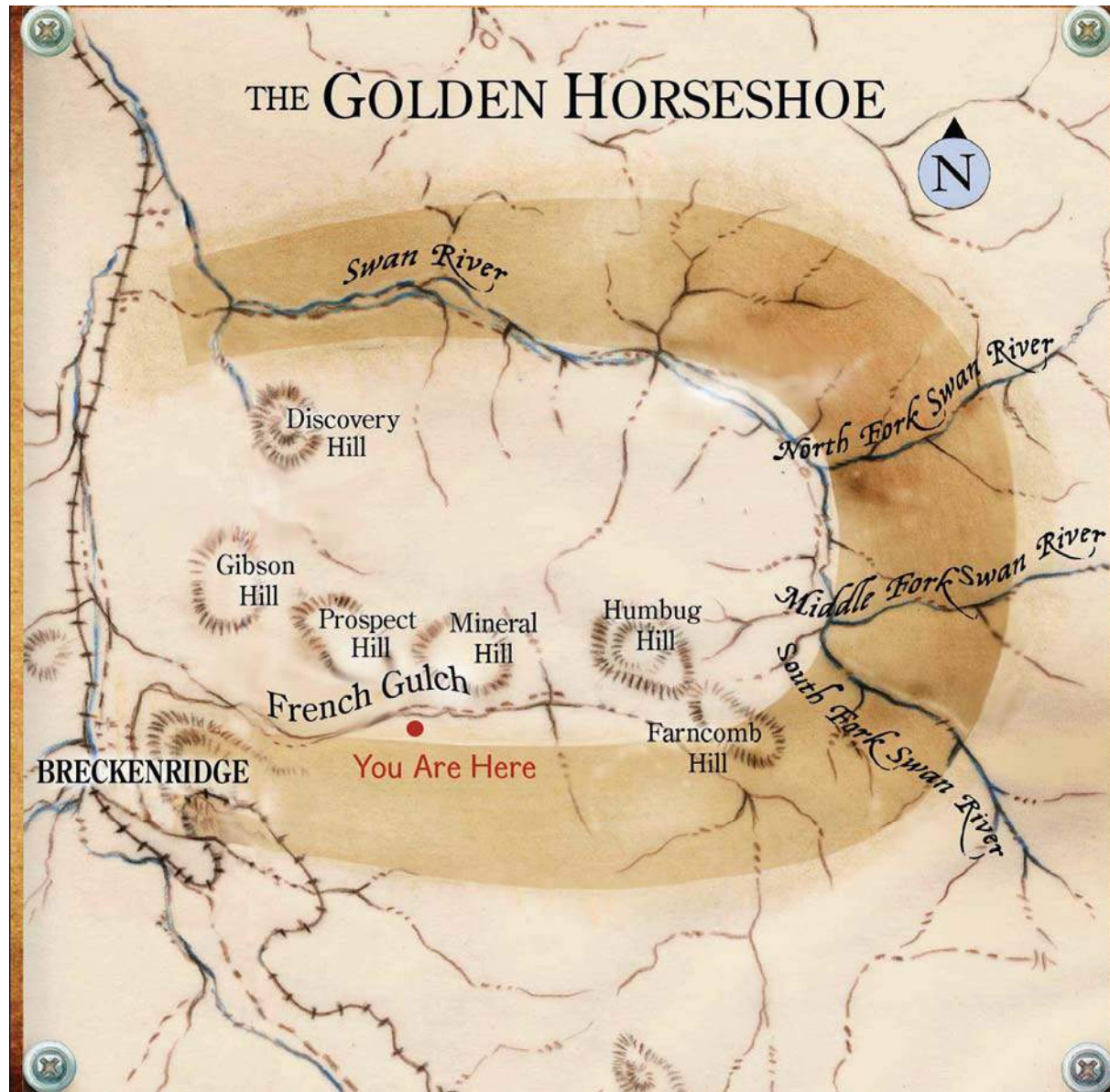




© Colorado Historical Society







THE GOLDEN HORSESHOE



Swan River

Discovery Hill

North Fork Swan River

Gibson Hill

Prospect Hill

Mineral Hill

Humbug Hill

Middle Fork Swan River

French Gulch

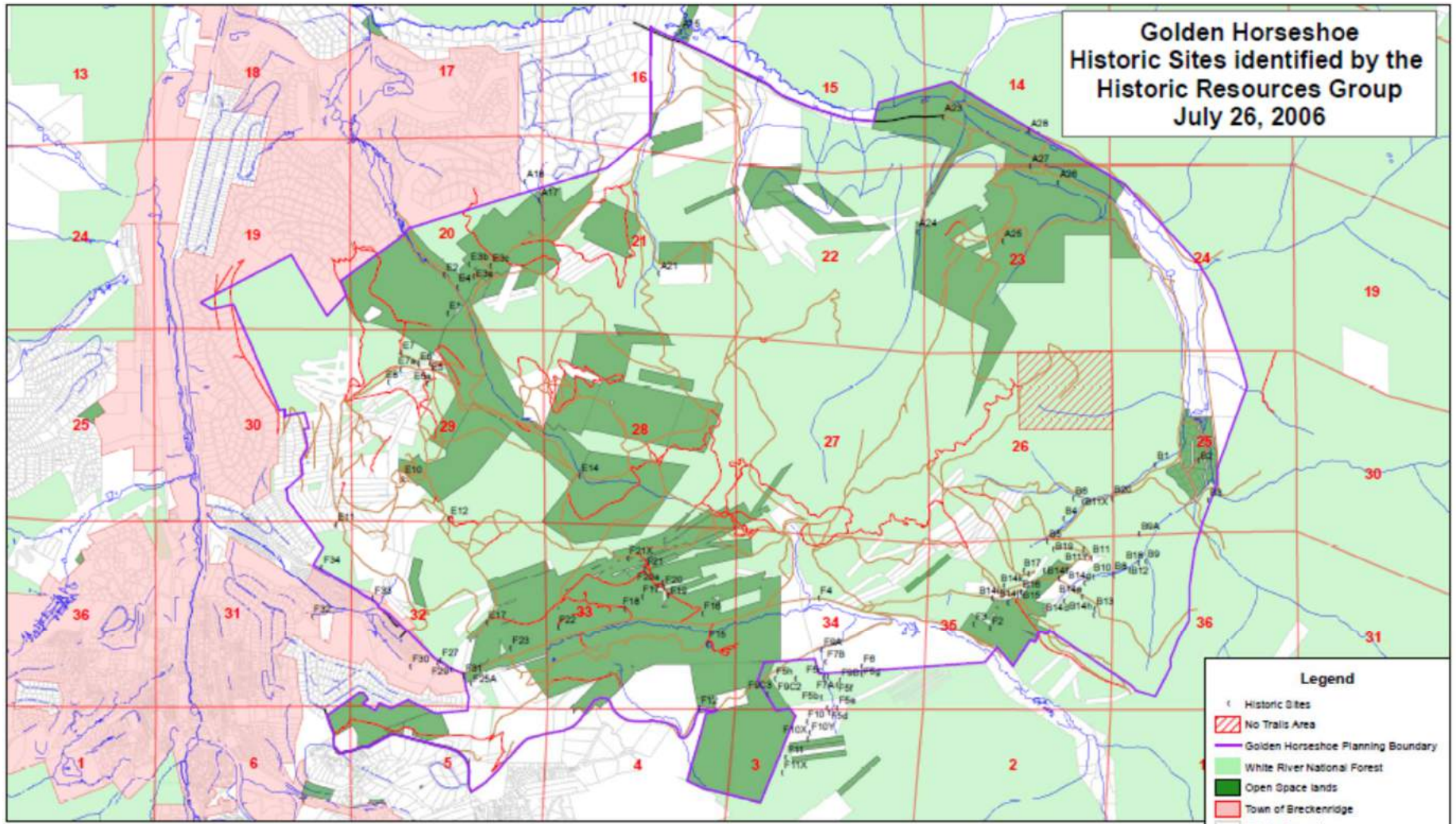
Farncomb Hill

South Fork Swan River

BRECKENRIDGE

You Are Here

**Golden Horseshoe
Historic Sites identified by the
Historic Resources Group
July 26, 2006**



Legend

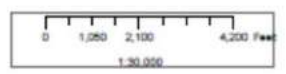
- ◻ Historic Sites
- ▨ No Trails Area
- Golden Horseshoe Planning Boundary
- ◻ White River National Forest
- ◼ Open Space lands
- ◼ Town of Breckenridge
- ◻ Private Property

Routes

- Roads
- Roads
- Trails



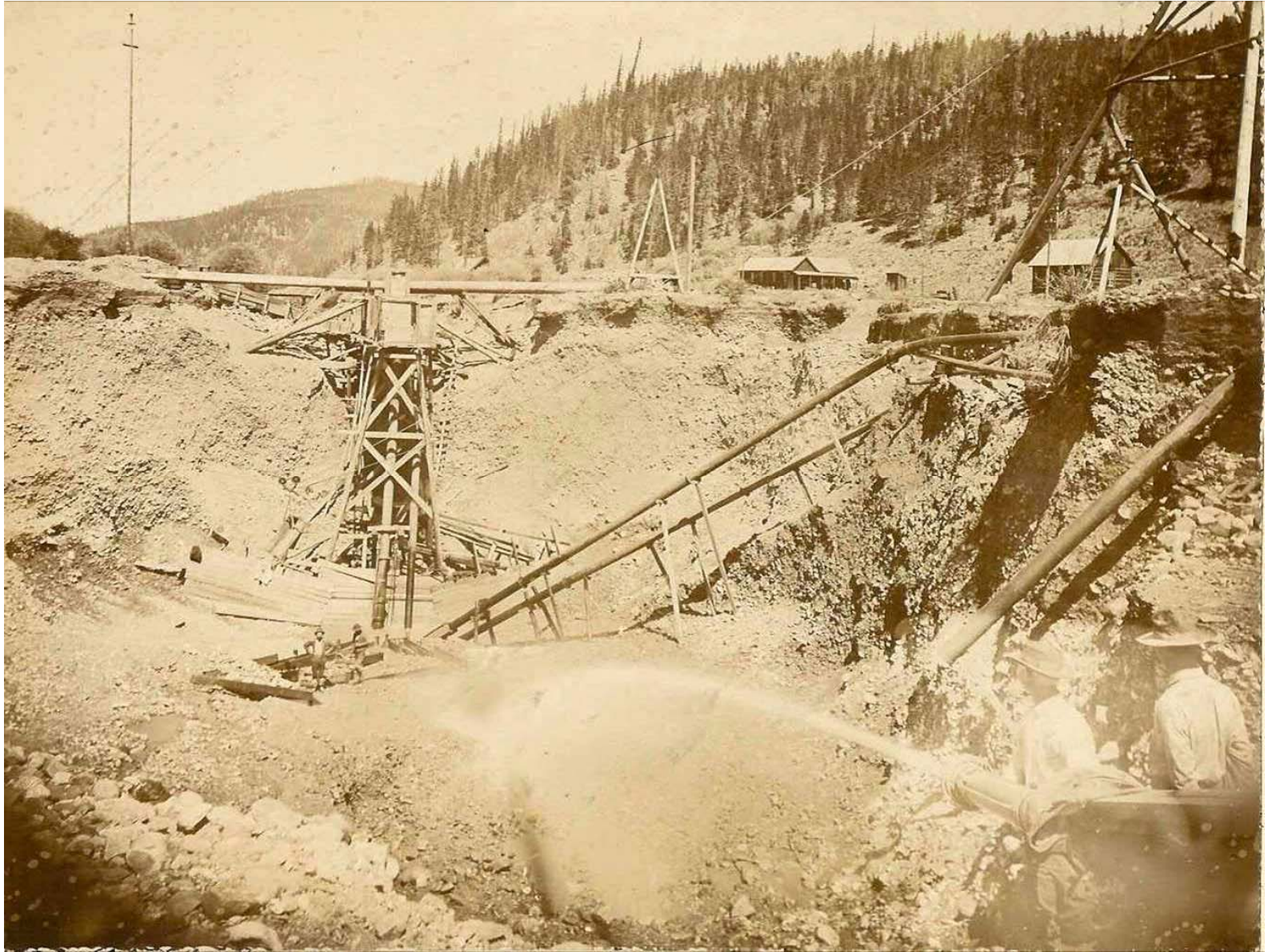
This map is for display purposes only.
Do not use for legal conveyance.
Not necessarily accurate by surveying standards and
does not comply with National Mapping Accuracy Standards.
© 2005 Summit County Government, Open Space and Trails Department.



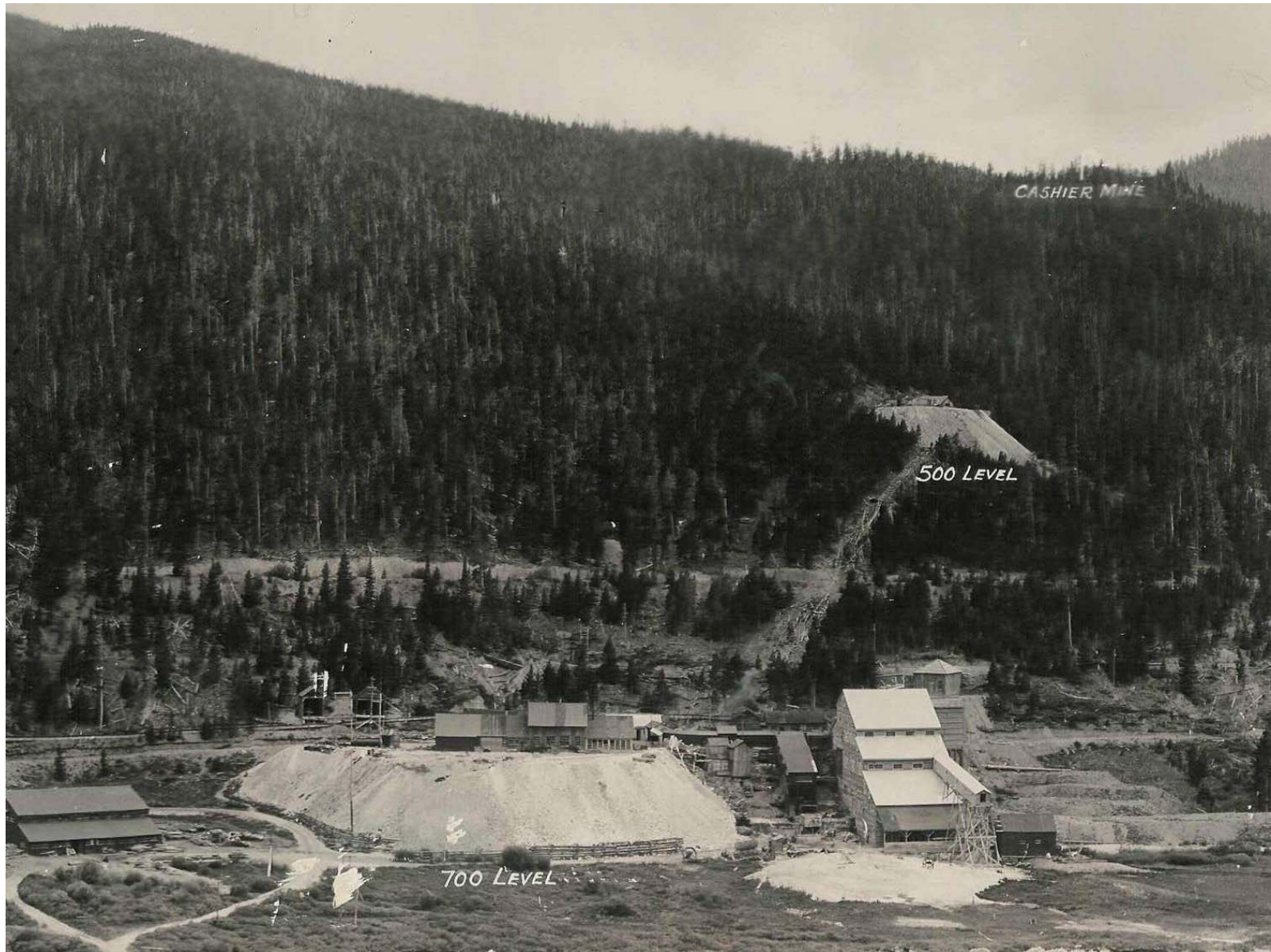


© Colorado Historical Society







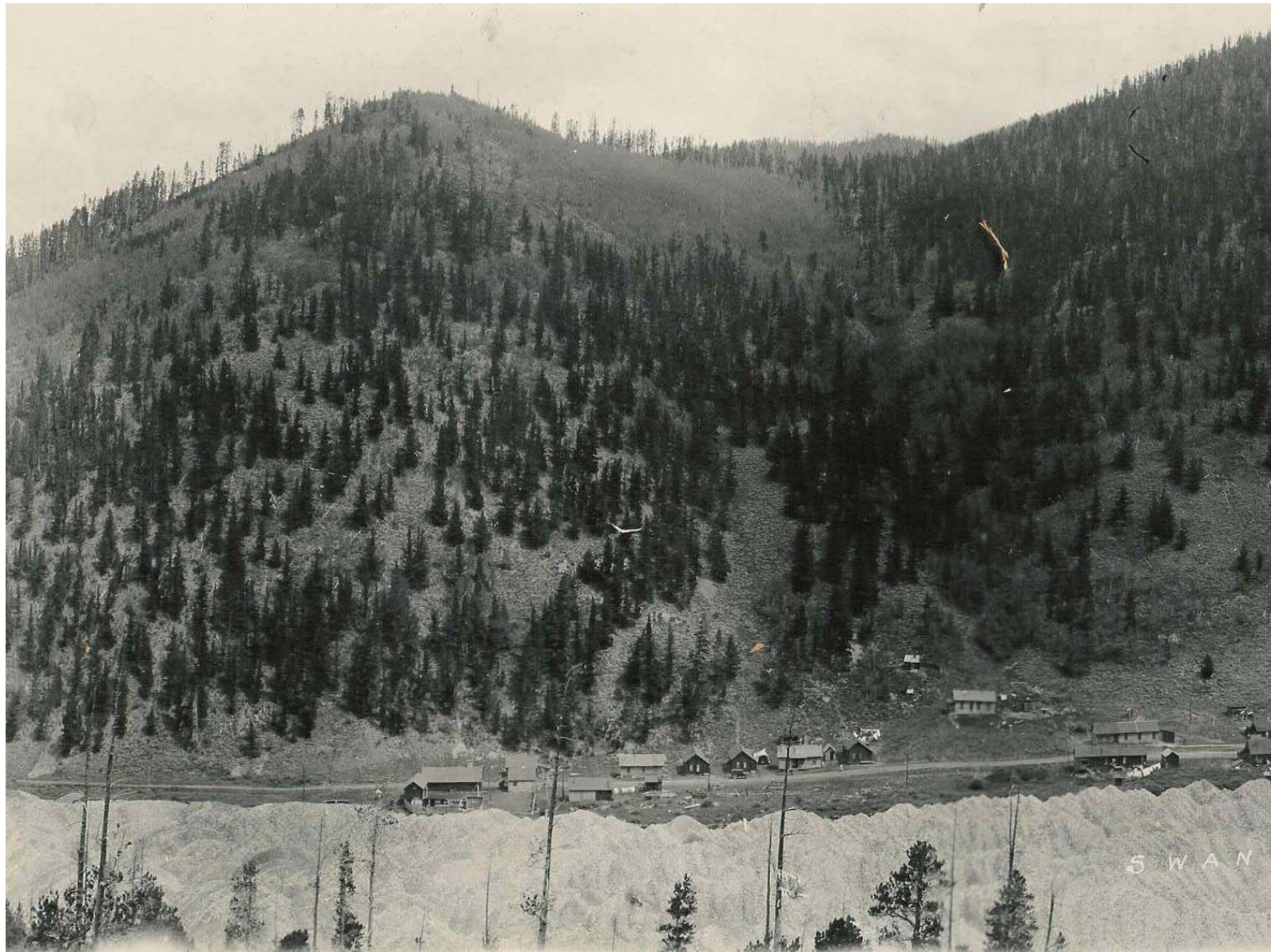


CASHIER MINE

500 LEVEL

700 LEVEL











What is the
Breckenridge Heritage
Alliance?



Heritage Tourism Program





Historic Preservation & Interpretation on Open Space



Iowa Hill Interpretive Trail





Derrick

The derrick structure is used for logging and other heavy work. It is a tall wooden post with a long boom that can be raised and lowered. The boom is used to lift logs and other heavy materials. The derrick is a simple but effective piece of machinery that has been used for centuries. It is a testament to the ingenuity of the early loggers and the importance of the timber industry in the West.

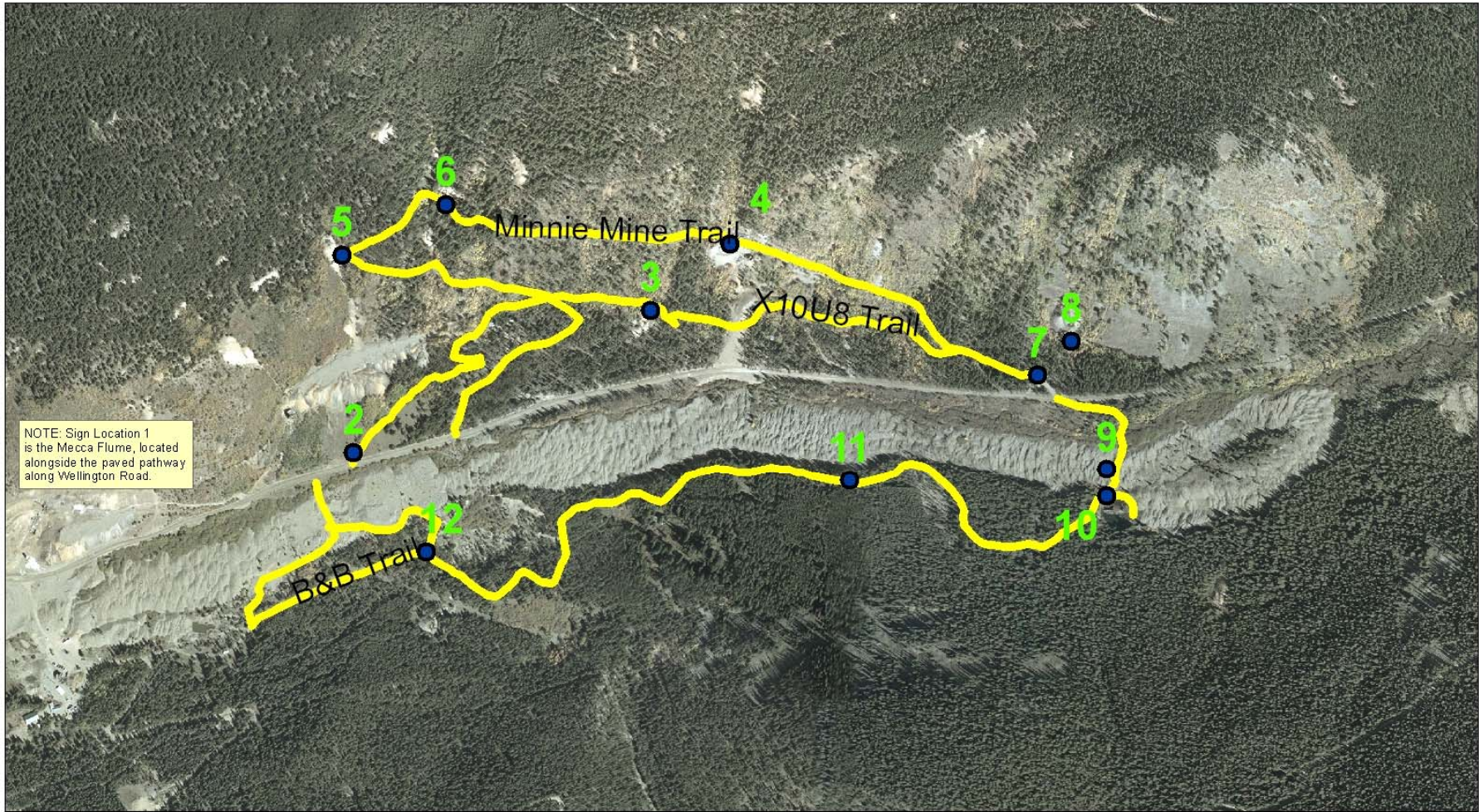




Bank Blasting

Flats, narrow prepared especially hard ground for washing by blasting it. Using traditional hard-rock mining practices, they tunneled into the hillsides then dug a cross cut parallel to the slope, forming a "T" pattern. They laid in bins of black powder or sticks of dynamite and blasted the bank. The drifts provided space for the bank to collapse into itself.





NOTE: Sign Location 1 is the Mecca Flume, located alongside the paved pathway along Wellington Road.



This map is for display purposes only.
Do not use for legal conveyance.
Not necessarily accurate by surveying standards and does not comply with the National Mapping Accuracy Standards.
© 2009 Town of Breckenridge Open Space Division.



**Project Site Map
French Gulch
Historical Signs**



Legend	
•	Proposed sign locations
—	Existing Trails



Approximate location of the dam site
Detailed description of the dam project and its impact on the local environment.



Local child rearing activity
Information regarding the historical or cultural significance of the area, particularly related to child rearing practices.

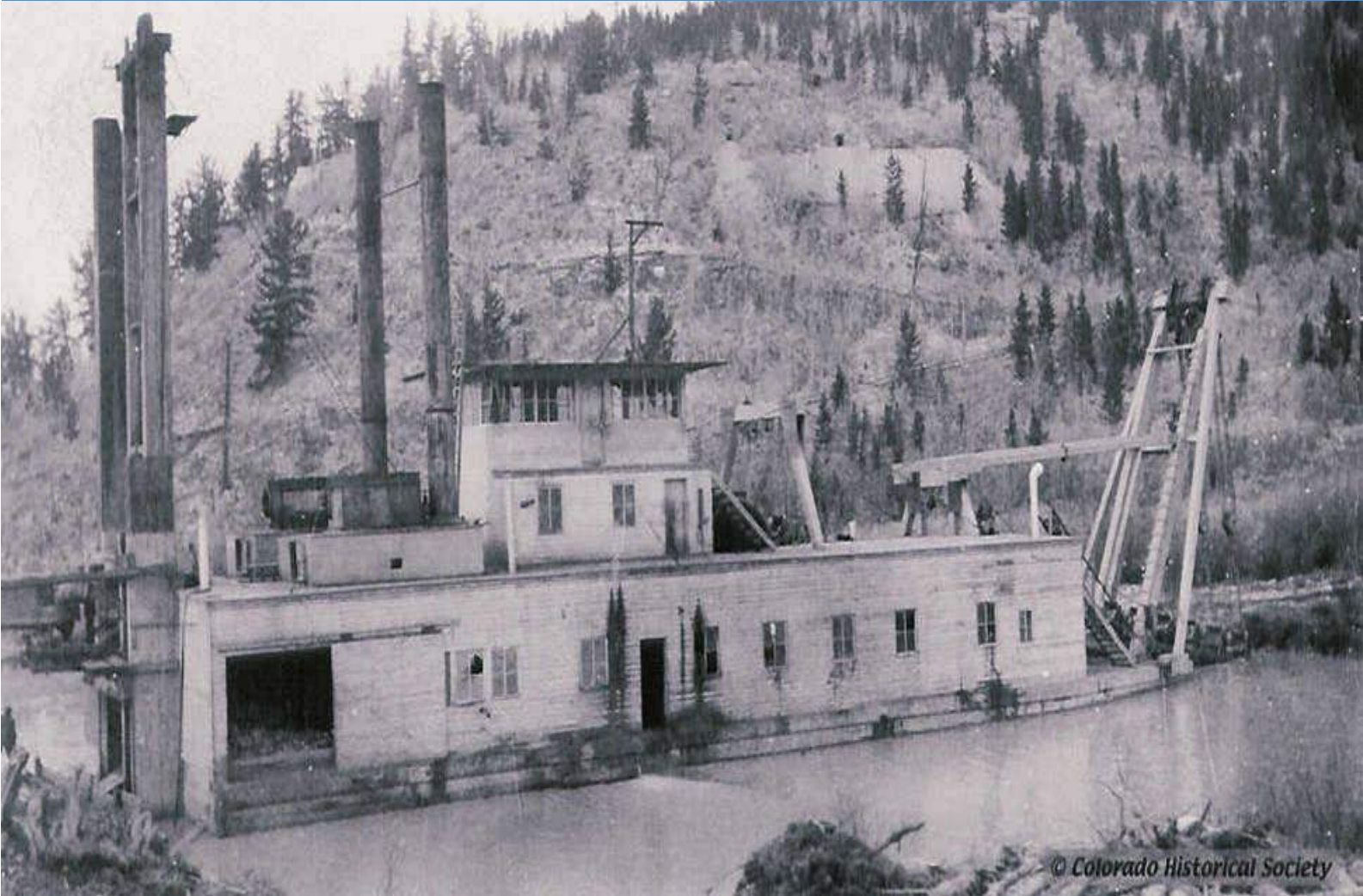
Jessie Mill







Reliance Dredge









Wellington Ore Bin









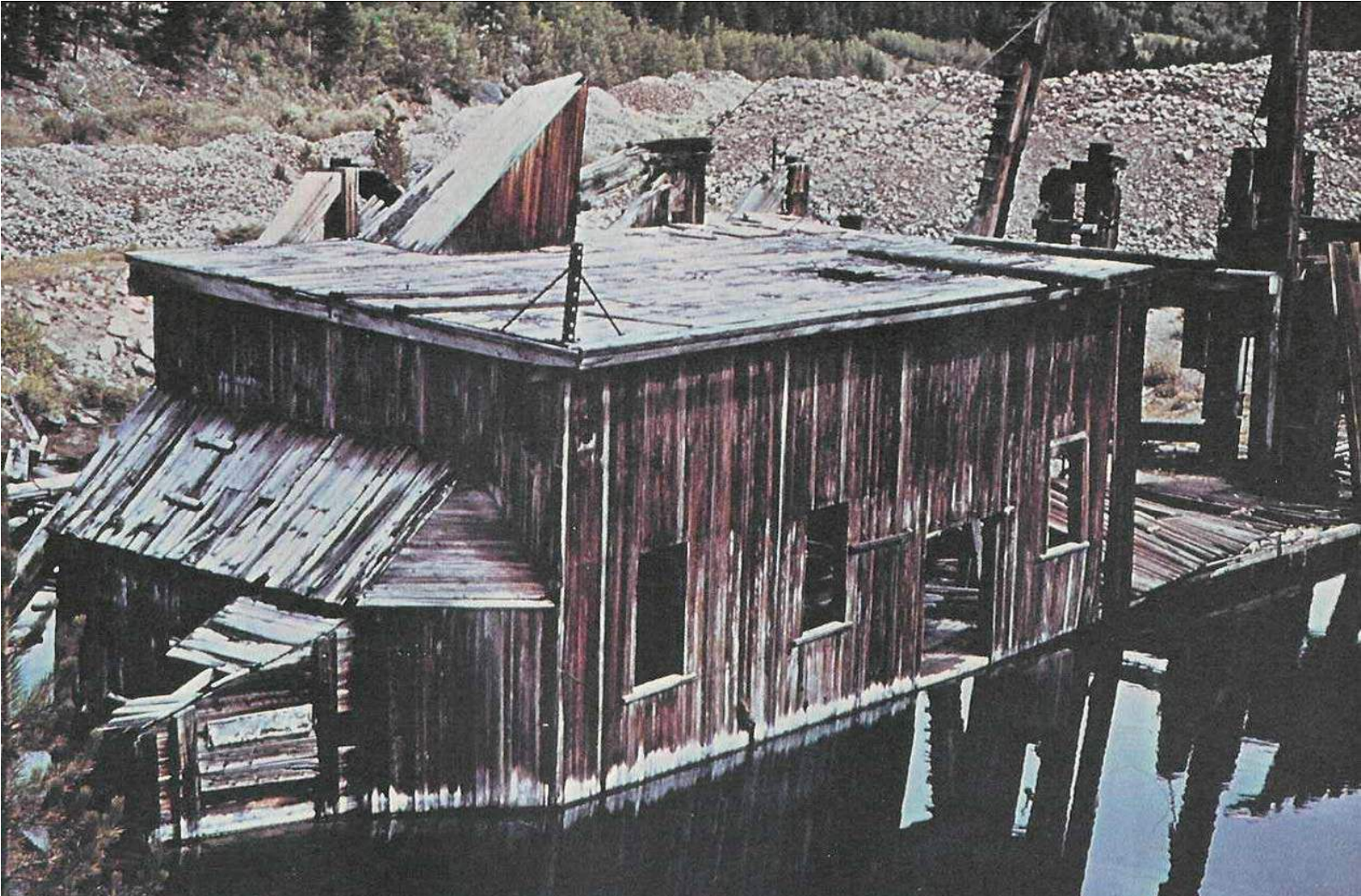




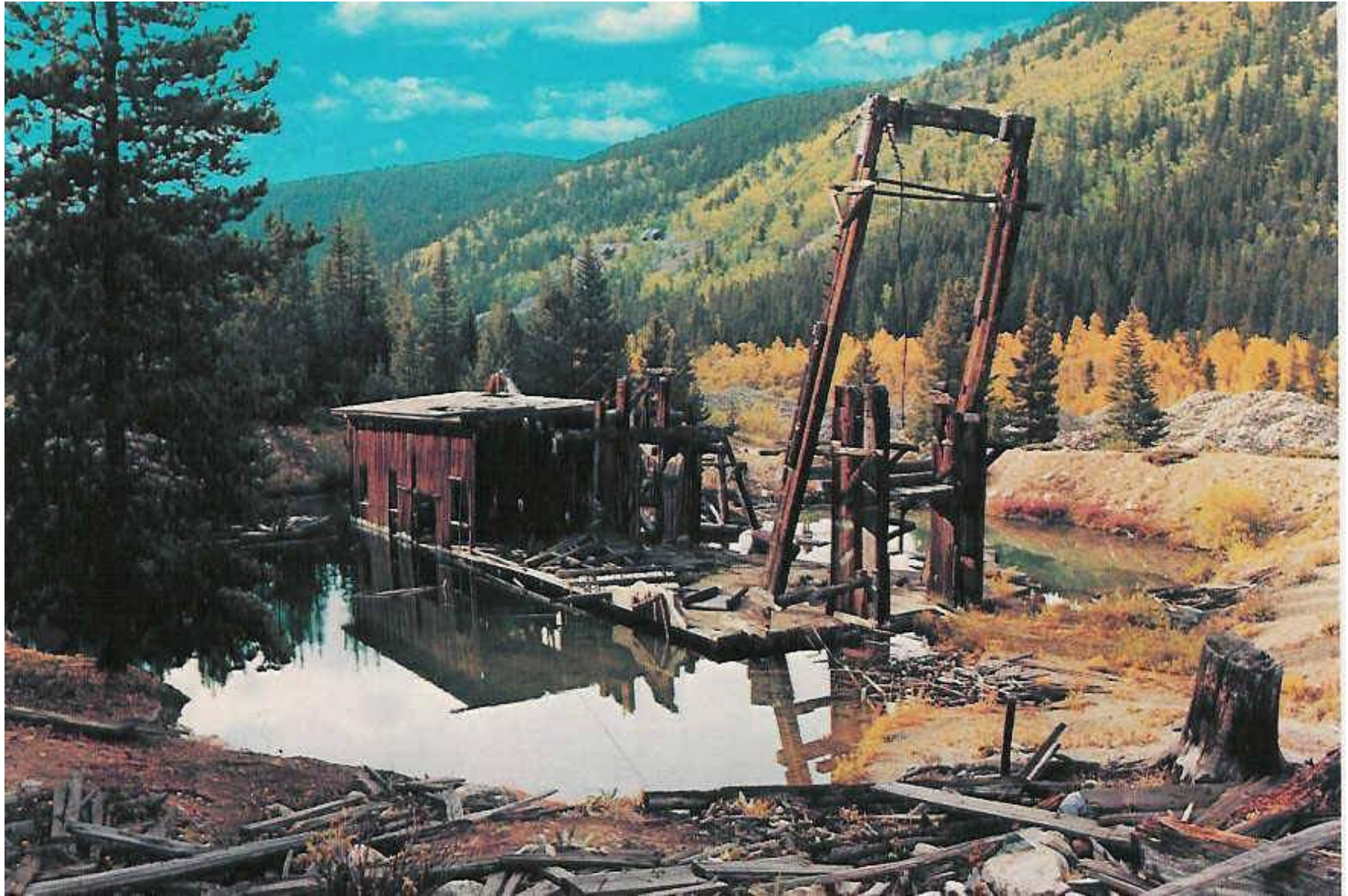


Reiling Dredge





Reiling Dredge – 1960s



Reiling Dredge - 1992



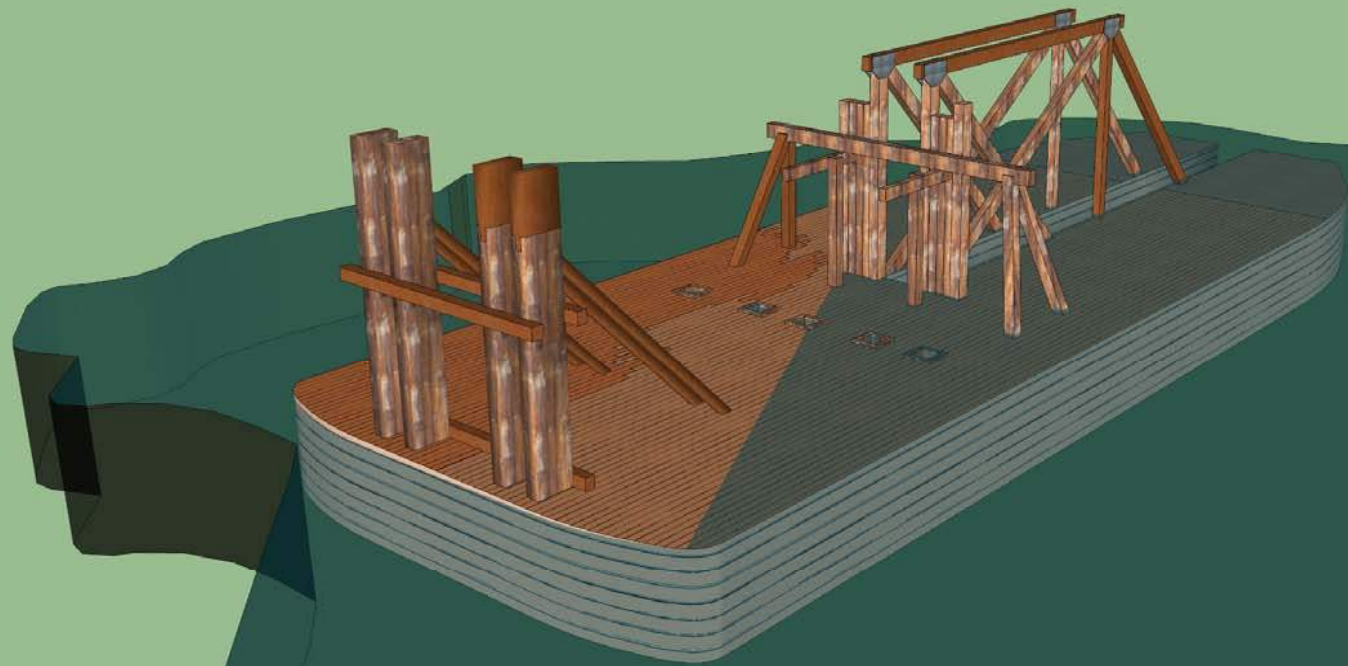


2000 – Site/Archaeological Survey
2001 – Historic Structure Assessment
2009 – Mapping & Documentation Study

2012 – Temporary Stabilization
2014/15 – Preservation Plan









Wentzell Cabin







What's next?

Ongoing maintenance

License agreements

Historic Resources Management Plan

Expansion of interpretive sign program

Future Projects TBD

Questions?

Contact info: Larissa O'Neil
Larissa@breckheritage.com
970-453-9767